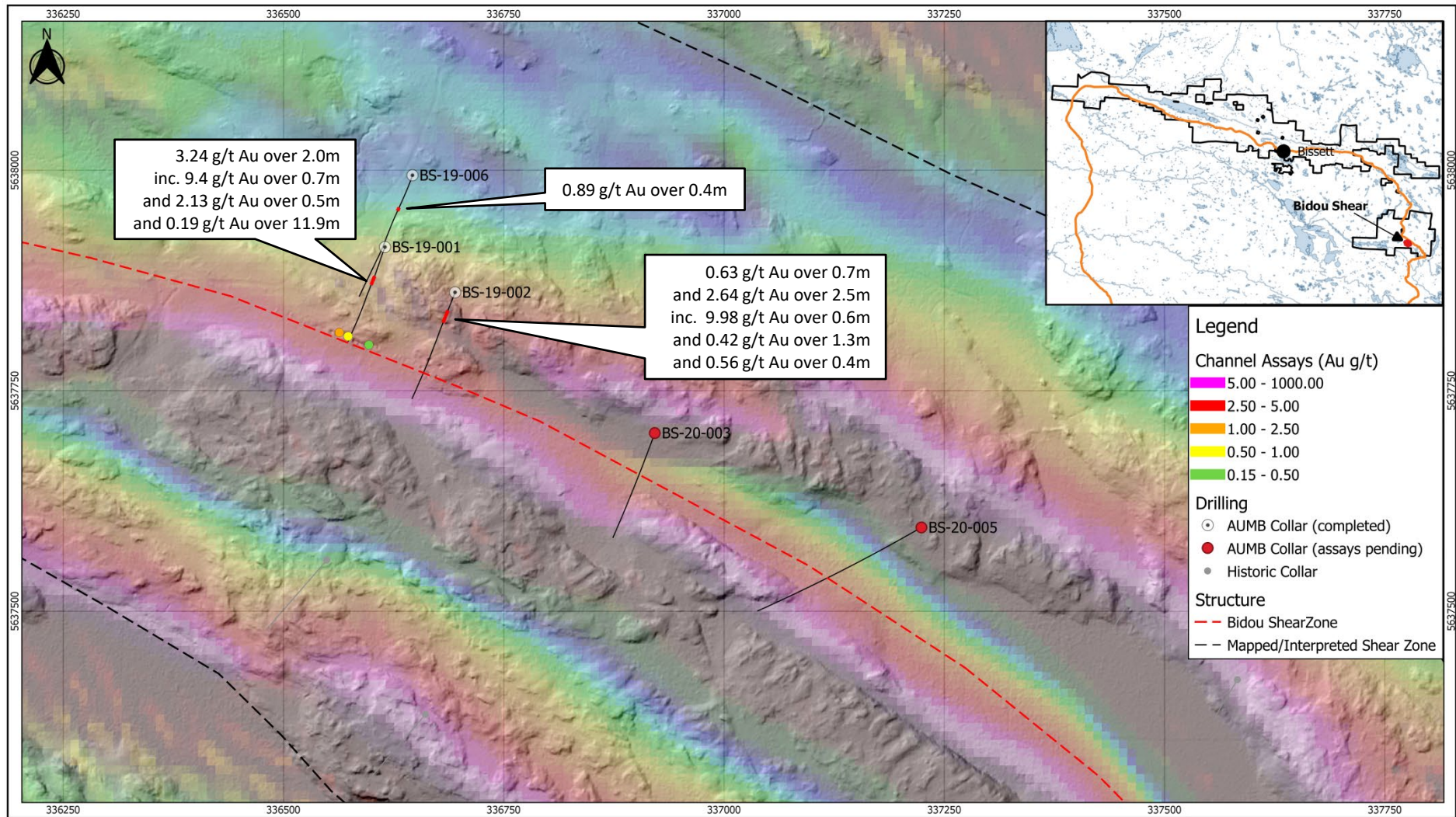


Plan map of the Bidou Shear Target, showing channel sample and drillhole locations, and major shear zones. Map base is a shaded-relief LiDAR DEM with AMAG (TMI-Tilt) drape.



	<b>1911 Gold Corporation</b>	<b>Bidou Shear Zone DDH Results and Channel Composites</b>	Bidou Lake, Manitoba	NAD 83, UTM Zone 15
			Scale: 0 50 100 150 200 250 m	Date Created: Jan 22, 2020