



Reimagining the Historic Rice Lake Gold Camp

TSX-V: AUMB
OTCQX: AUMBF

**February
2021**

1911gold.com





Cautionary Statements

DISCLAIMER

The information provided in this presentation is not intended to be a comprehensive review of all matters concerning 1911 Gold Corporation ("1911 Gold" or, the "Company") and should be read in conjunction with all other disclosure documents of the Company. The information contained herein is not a substitute for detailed investigation or analysis. No securities commission or regulatory authority has reviewed the accuracy or adequacy of the information presented.

FORWARD-LOOKING STATEMENTS

This presentation contains statements and information that constitute forward-looking information within the meaning of Canadian securities legislation, referred to herein as "forward-looking statements". These statements include, among others, statements with respect to the amount of mineral resources, gold and silver price assumptions, exchange rate assumptions, the Company's potential plans and operating performance and exploration and development potential of its projects; opportunities to enhance the value of the existing True North Project, capital cost reduction opportunities and other plans and objectives of 1911 Gold. These statements address future events and conditions and, as such, involve known and unknown risks, uncertainties and other factors which may cause the actual results, performance or achievements to be materially different from any future results, performance or achievements expressed or implied by the statements. Such factors include, among others and in addition to those described elsewhere in this presentation, delays in obtaining or inability to obtain required government or other regulatory approvals, permits or financing, the risk of unexpected variations in mineral resources, grade or recovery rates, failure of the plant, equipment, processes or infrastructure to operate as anticipated, of accidents, labour disputes, and unanticipated delays in completing other development activities, the risk that estimated costs will be higher than anticipated and the risk that the proposed mine plan and recoveries will not be achieved, equipment breakdowns and bad weather, the timing and success of future exploration and development activities, exploration and development risks, mineral resources are not as estimated, title matters, third party consents, operating hazards, metals prices, political and economic factors, actions by governmental or regulatory authorities including changes in tax laws or incentive programs, competitive factors and general economic conditions. Actual results may vary from those implied or projected by forward-looking statements and therefore investors should not place undue reliance on such statements. The forward-looking statements herein are made as of the date of this presentation and the Company expressly disclaims any intention or obligation to update or revise any forward-looking statements whether as a result of new information, future events or otherwise except as required by applicable securities legislation. The Technical Report for the True North Mine, Bissett, Manitoba, Canada, NI 43-101 Mineral Resource Technical Report, with an effective date of March 31, 2018, can be viewed at www.sedar.com under the 1911 Gold Corporation profile.

TECHNICAL DISCLOSURE

The technical information in this presentation has been approved by Dr. Scott Anderson, Ph.D., P.Geo., Vice President of Exploration. Dr. Scott Anderson is a Qualified Person for the purposes of NI 43-101 as well as a Competent Person (as defined in the JORC Code, 2012 edition) as a practicing member of Engineers Geoscientists Manitoba.



About Us

A junior gold producer leading the next generation of precious metals exploration and development.

Top Tier Exploration & Mining Jurisdictions

Manitoba & Ontario: Mining friendly, with proven regional potential for world-class Au deposits

Experienced Management & Technical Team

Regional expertise and proven track record of developing mines and delivering shareholder value

District-Scale Land Position

Consolidated a historically fragmented land position on the world-class Rice Lake gold belt

Significant Infrastructure in Place

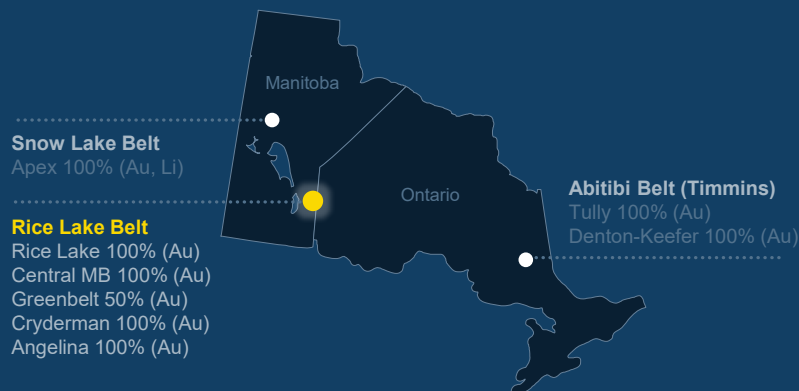
Fully permitted and operational mill (1,300 tonnes-per-day) and tailings facility

Comprehensive Exploration Strategy

Opportunity for significant value creation through new discoveries in underexplored areas

Revenue Stream from Reprocessed Tailings

Healthy cash balance and a steady cash flow;
Well-funded exploration program



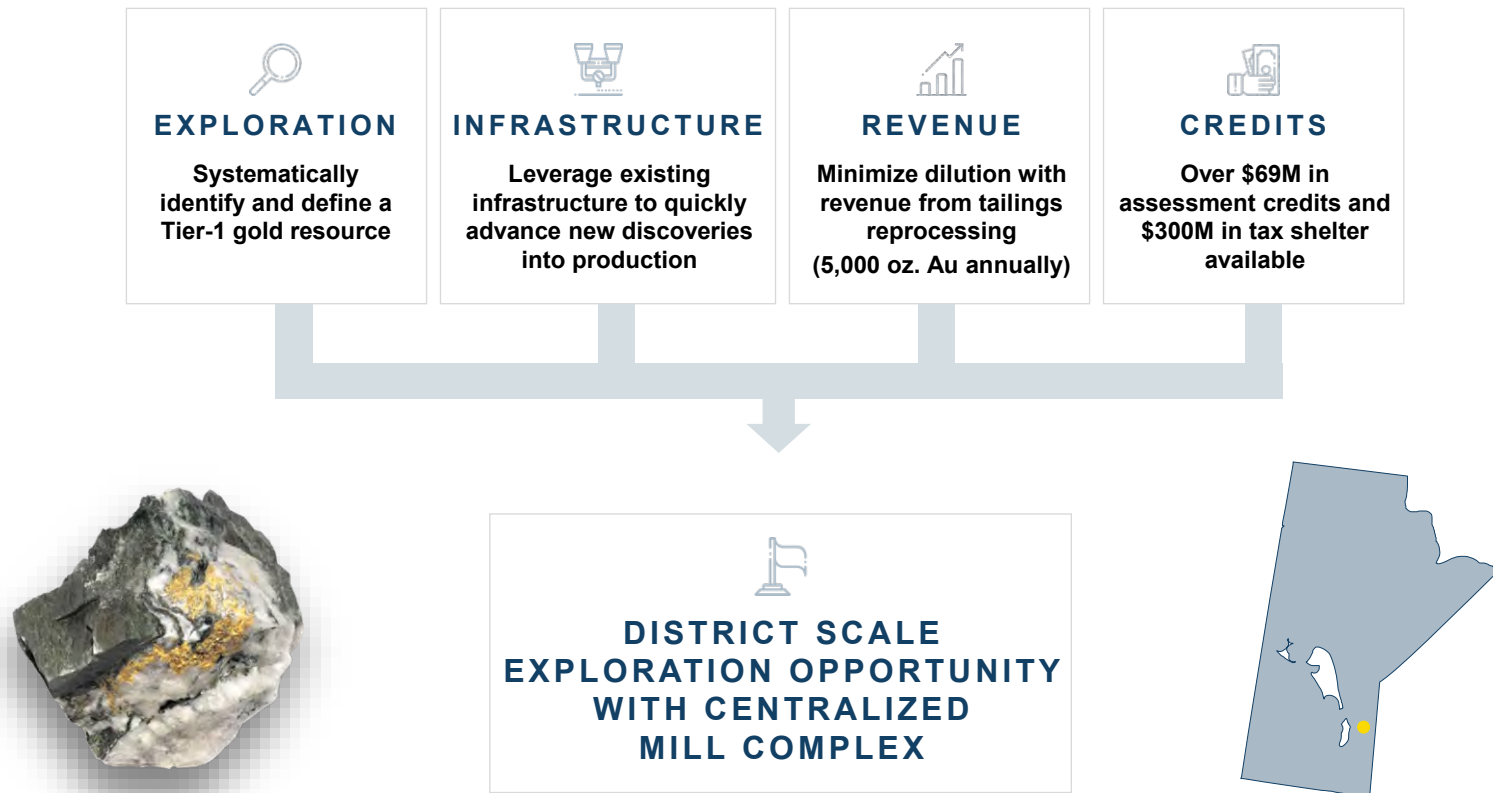
Manitoba

411	56,552	\$69.1M
DISPOSITIONS	HA.	CREDITS

Ontario

122	2,550	\$968K
DISPOSITIONS	HA.	CREDITS

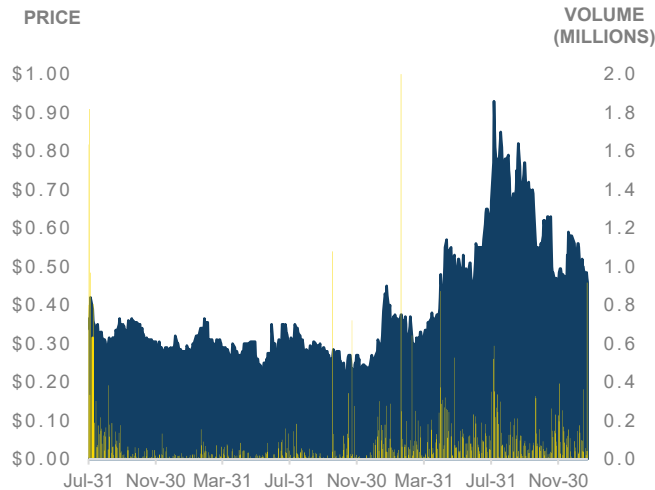
Corporate Strategy





Capital Structure

SHARE PERFORMANCE



CAPITAL STRUCTURE

Shares Outstanding	46,562,396
Options and RSUs	4,686,240
Warrants (W. Avg Life - 5.2 years)	2,990,233
Fully-Diluted	53,587,627
Market Capitalization (20-d VWAP)	\$29M
Share Price (20-d VWAP)	\$0.62
Daily Avg Vol (20-d)	94,270

Well-funded
To Execute Plans

Cornerstone
Strategic Investor

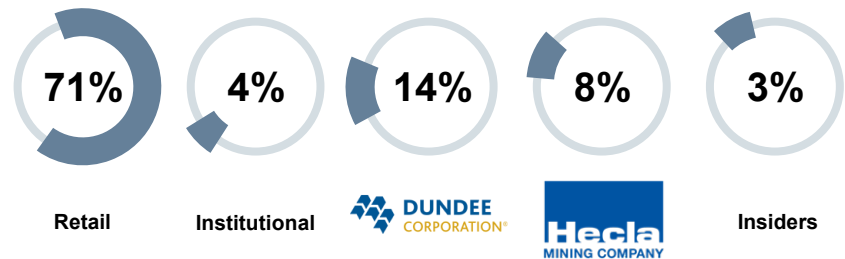
Strong Insider Support

Cash Position

\$10.0M

December 31, 2020

OWNERSHIP



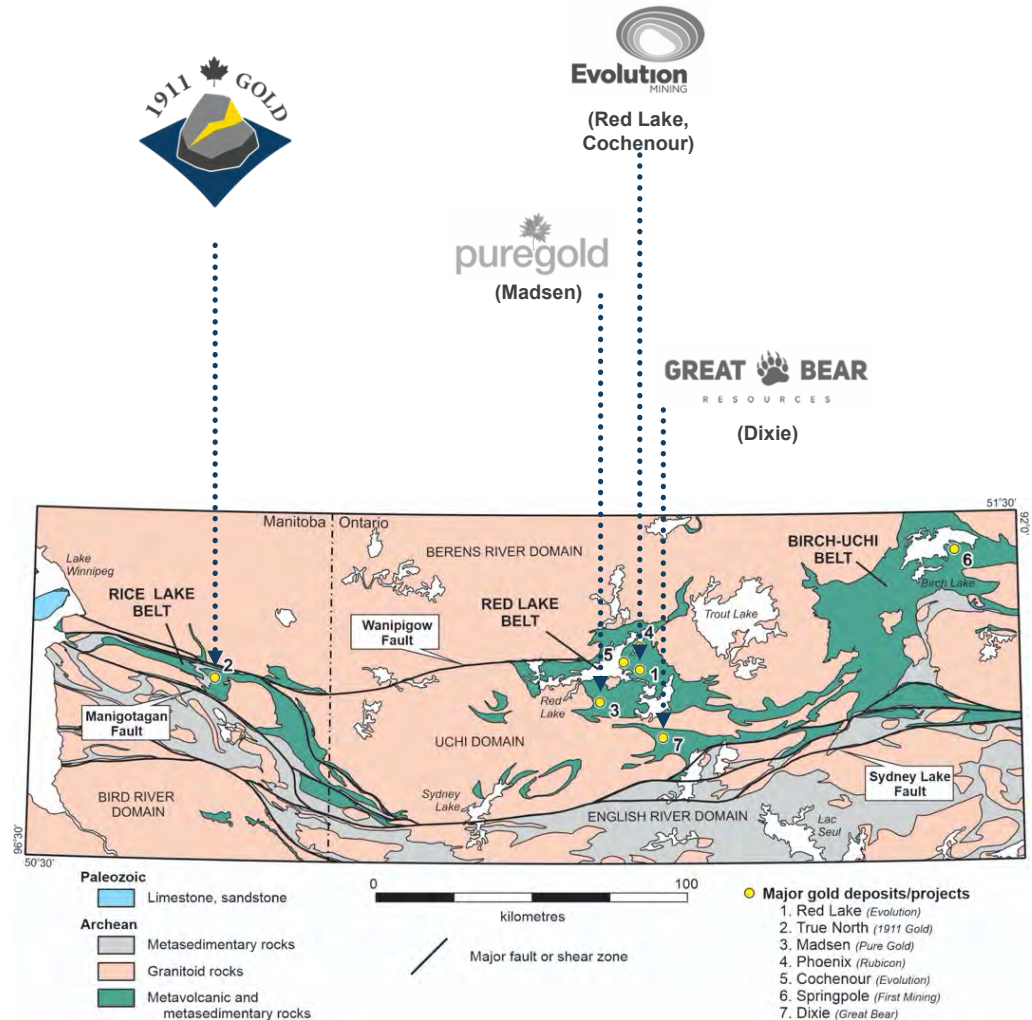
Rice Lake Belt

Part of the Uchi Domain: Tier-1 in Canada in gold endowment (>40M oz.)

> Western extension of the Red Lake belt, with the same geology and history

> Hallmarks of a world-class orogenic gold district

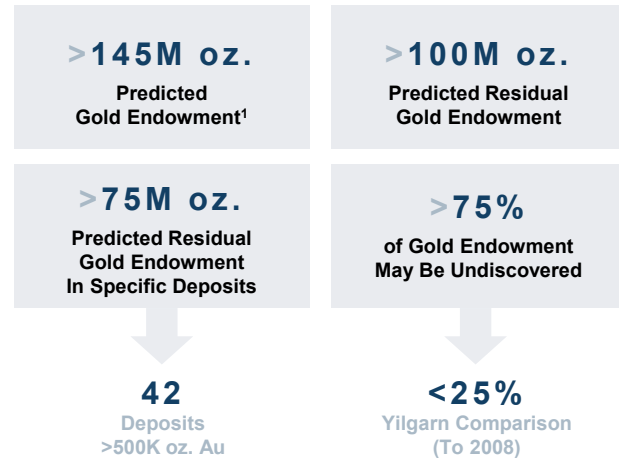
- Ancient plate margin – focussed fluid flow
- Regional Breaks' (fluid conduits)
- Fault-controlled ('Temiskaming') basins
- Fertile source (English River domain)
- Favourable host rocks (Fe-tholeiite)
- Complex second and third-order faults
- Large-scale structural traps
- Widespread gold occurrences
- Diverse styles of gold mineralization





Gold Endowment Potential

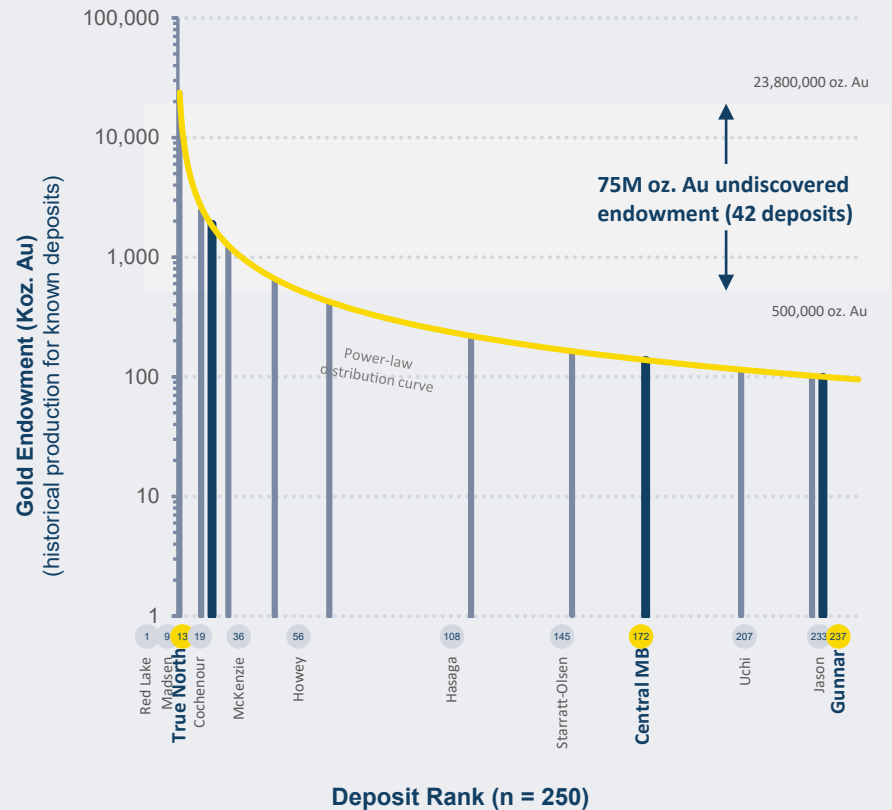
Opportunity for significant new discoveries in the Rice Lake – Red Lake district



UNDER EXPLORED SEARCH SPACE

¹Based the commonly-observed power law relationship of frequency-size distributions in natural systems (Zipf's Law); applied to various Archean gold terranes (e.g., Guj et al., 2011, Econ. Geol., v106, p241)

RICE LAKE – RED LAKE



NOTES

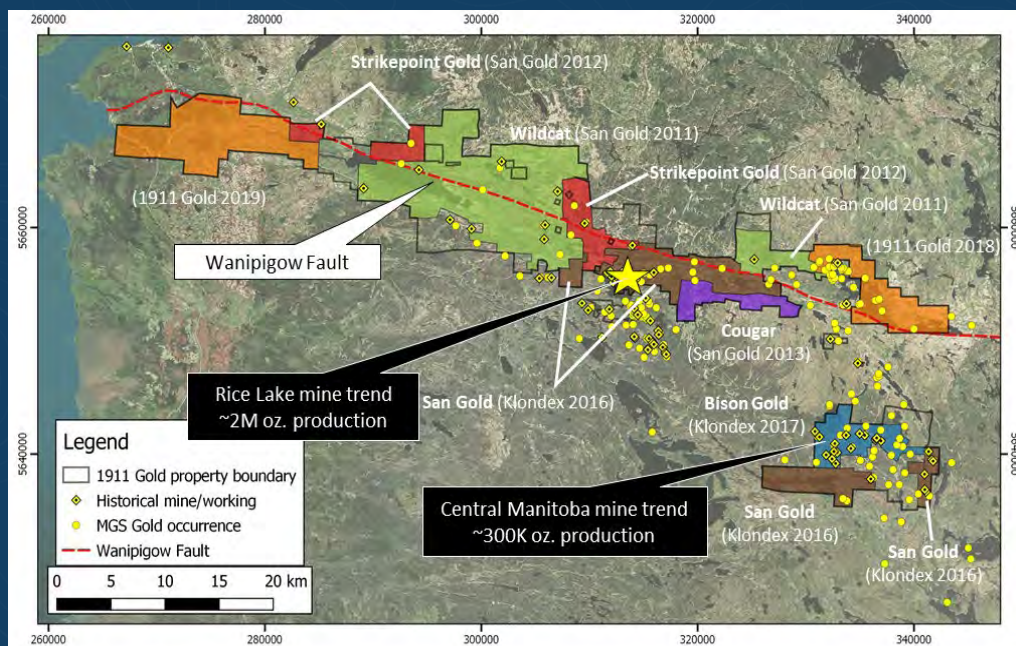
- Distribution curve represents an estimate of the predicted deposit endowment of a terrane
- Predicted deposits not matched by known deposits represents residual deposit endowment
- Degree of exploration maturity of a district can be estimated with reasonable degree of accuracy

Dominant Land Position

Consolidation = Opportunity

Consolidation History of 1911 Gold's Current Land Position

- Historically fragmented land position limited previous exploration in the Rice Lake belt - district consolidated primarily over the last 10 years
- Contiguous land packages now held by 1911 Gold are the largest ever assembled for the belt, totaling 54,000 hectares in two major claim blocks
- Covers a 75 km segment of the Wanipigow Fault and includes the Rice Lake and Central Manitoba mine trends, with collective production of 2.3M oz. Au

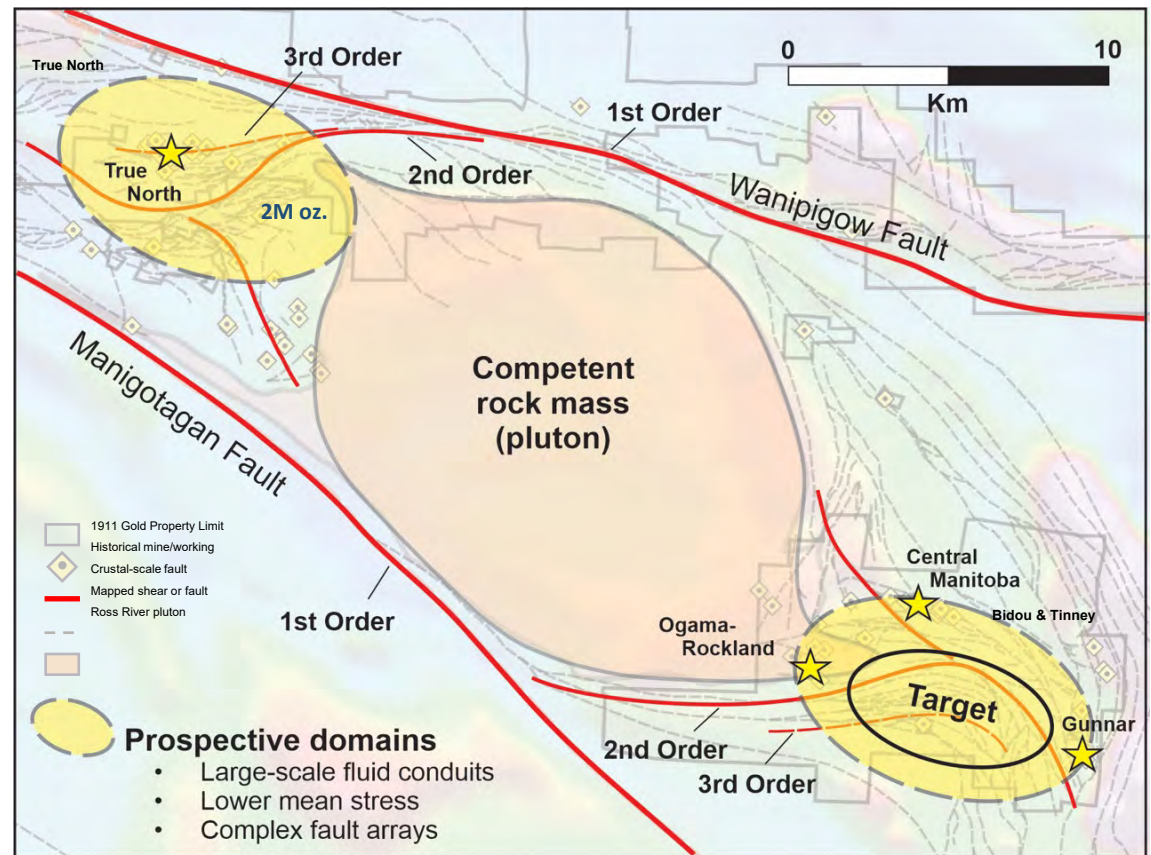


★ True North Complex

Key Structures Identified

Identical structural setting
to True North deposit
identified in Tinney & Bidou
project areas:

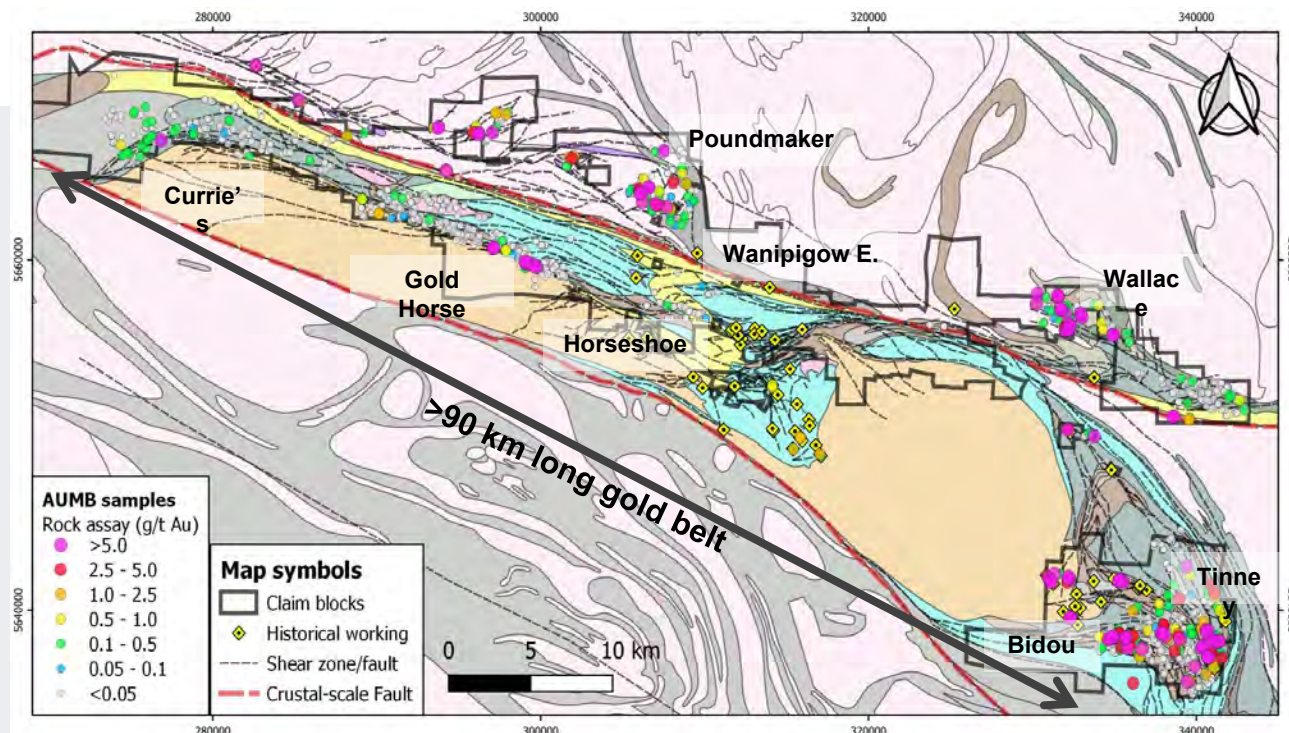
- Belt-scale symmetry of 1st, 2nd and 3rd Order structures
- Structure controlled by large mass of competent rock
- Surrounding rocks fractured during later deformation
- Critical 3rd Order structures recently identified at Bidou-Tinney



Evidence of Large-scale Gold Systems

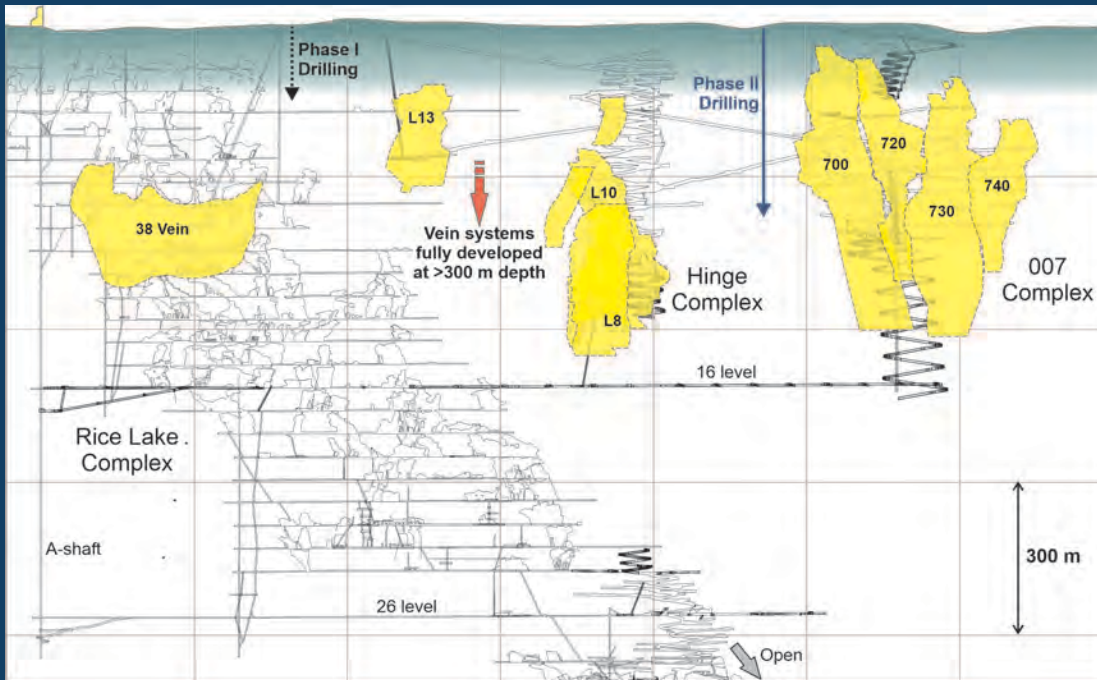
Multiple centres of high-grade gold in bedrock offer significant discovery potential

- > Sampling by 1911 Gold confirms the widespread presence of high grade gold
- > Distinct clustering of values reflects local geological controls as well as the limits of new mapping and prospecting coverage



Main Gold Zone at Rice Lake > 300m

Green shading corresponds to the search-space of first-pass drilling at Bidou and Tinney



Longitudinal section of the True North Mine Complex (looking northeast) showing the most significant orebodies (grey) in upper portion of the mine workings

High-grade orebodies extend to depth down-plunge

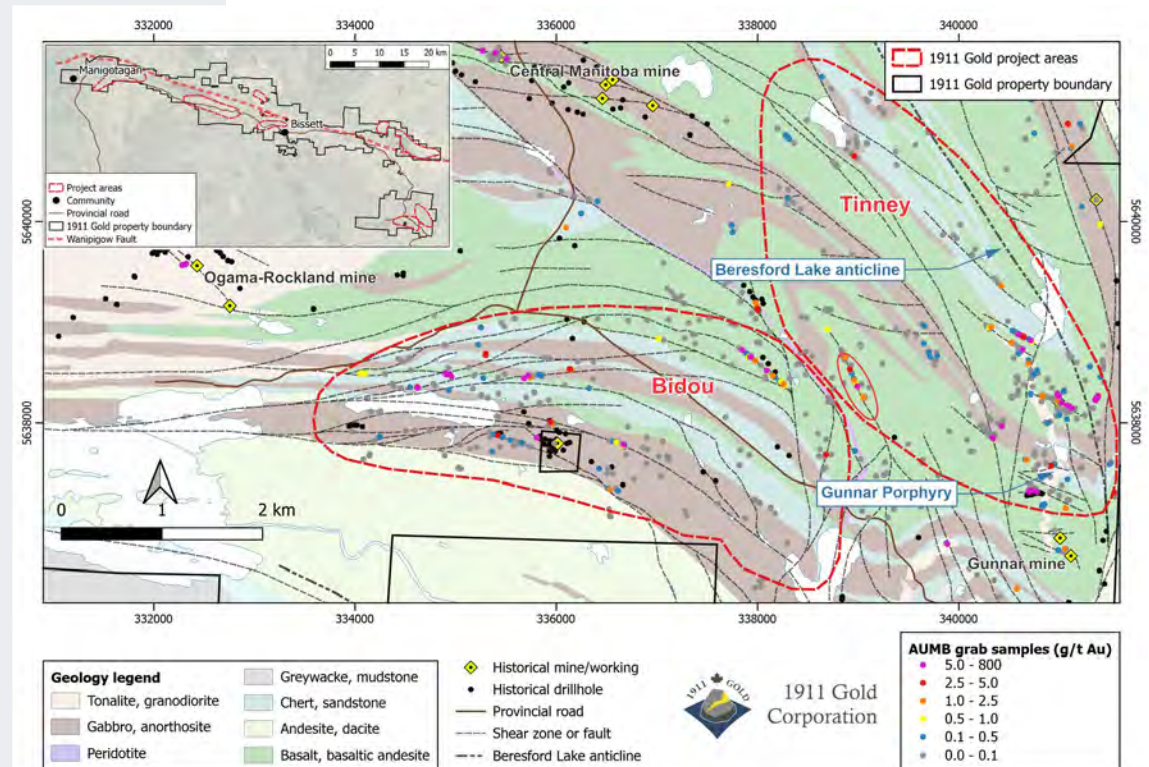
- Largest orebodies, or most significant portions of orebodies, at True North were developed at vertical depths >300m (red line) and extend >2 km down-plunge in places.
- Near-surface intercepts are suggestive, but often not representative, of deeper potential: 007 and Hinge orebodies were discovered by deeper drilling, following up on historical surface showings and shallow drill intercepts
- First-pass exploration drillholes test the structures at 100-150m vertical depths - the shallower drillholes, with oriented drill core, are critical steps to informing and optimizing deeper drillholes (>300m)

Multiple Large Scale Mineralized Targets

Highly-prospective setting

- Regional-scale structural dome
- Kilometre-scale shear structures
- Excellent host rocks (Fe-tholeiites)
- Historical producers (~300k oz. Au)
- High-grade gold showings (coloured dots)
- Underexplored, with minimal previous drilling (black dots)

Compelling evidence of a robust kilometres-scale mineral system



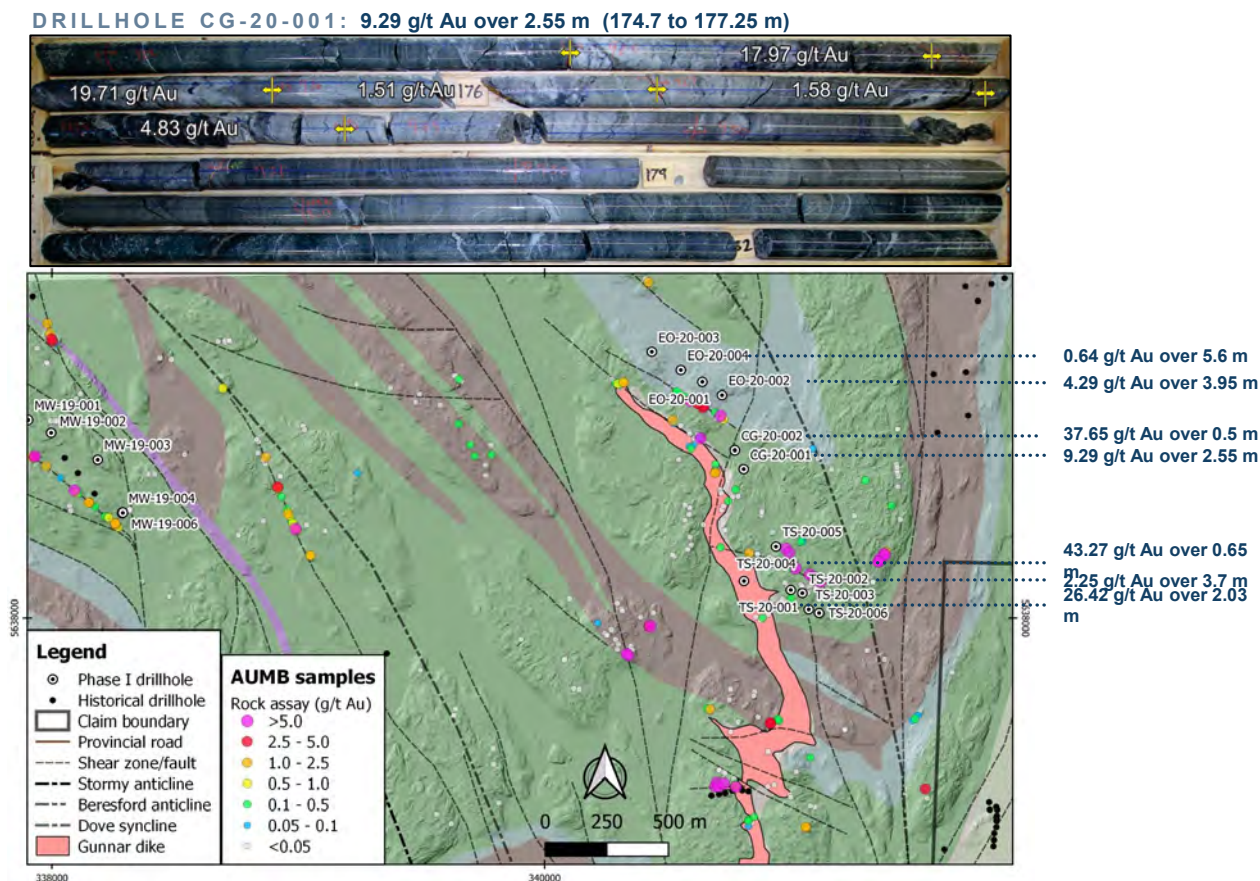
Tinney Project

Testing the model

Phase I Drilling Program (Q4 2019 - Q1 2020)

- First-pass drilling of 3 targets
- Gunnar dike (host) verified to depth
- Several intersecting structures
- Sheeted vein systems
- Thick zones of intense alteration
- High-grade gold intercepts (Gunnar dike and country rocks)

**Demonstrated potential in
the untested core of a belt-
scale fluid conduit**



Bidou Project

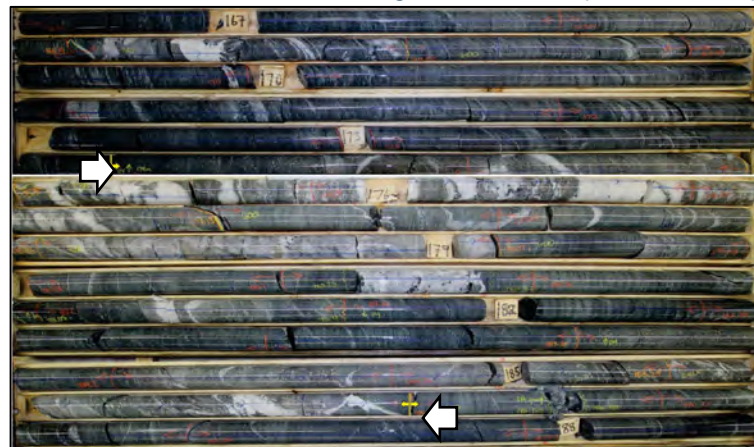
Testing the model

Phase I Drilling Program (Q4 2019 - Q1 2020)

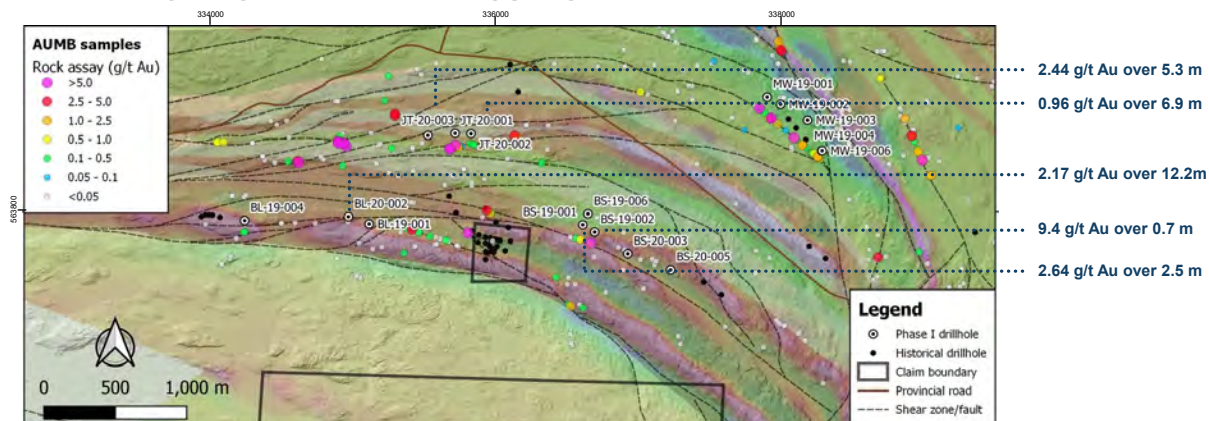
- First-pass drilling of 4 targets
- 3rd Order structures confirmed
- Consistent gold intercepts, locally over significant widths
- Various styles of mineralization & alteration (several mineralizing events)
- Local high-grade gold

**Demonstrated
potential along untested
kilometre-scale structures**

DRILLHOLE BL-20-002: 2.17 g/t Au over 12.2 m (174.0 to 186.2 m)



**LIDAR DEM WITH 1VD-MAG AND BEDROCK GEOLOGY DRAPE
WITH HIGHLIGHTED DRILL RESULTS**

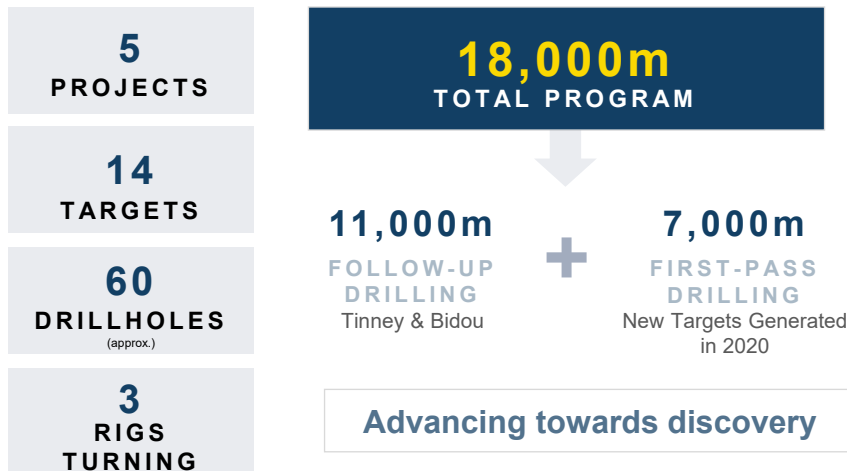




Phase II Drilling Program

Systematic drilling of large-scale structures with clear potential to host significant gold deposits

✓ Fully Funded ✓ Permitted



Next Steps

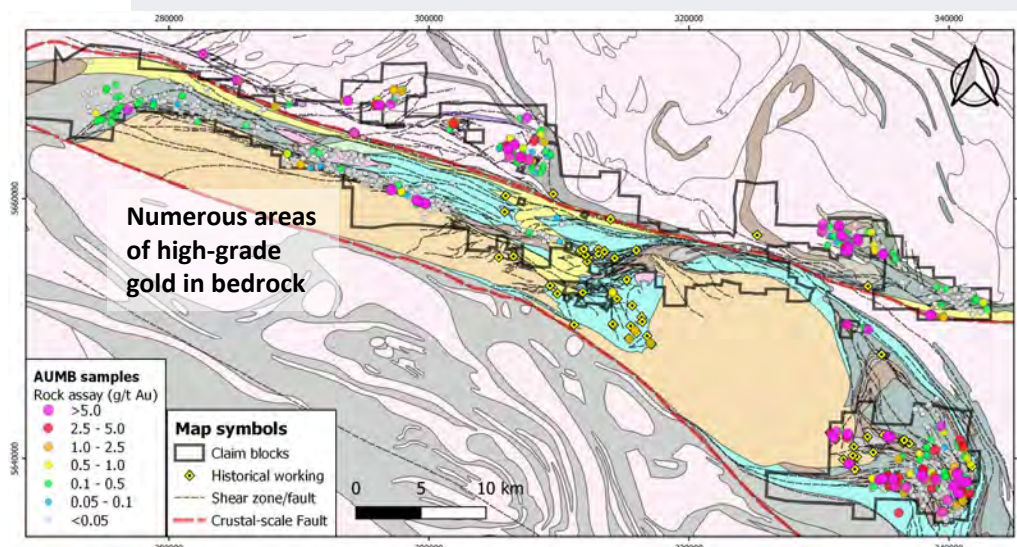
Continue to aggressively advance towards discovery

> Ongoing (Q1 2021):

- 18,000-metre Phase II drilling program
- Super high-resolution drone MAG surveys
- 3D IP geophysical surveys

> Upcoming (H1 2021):

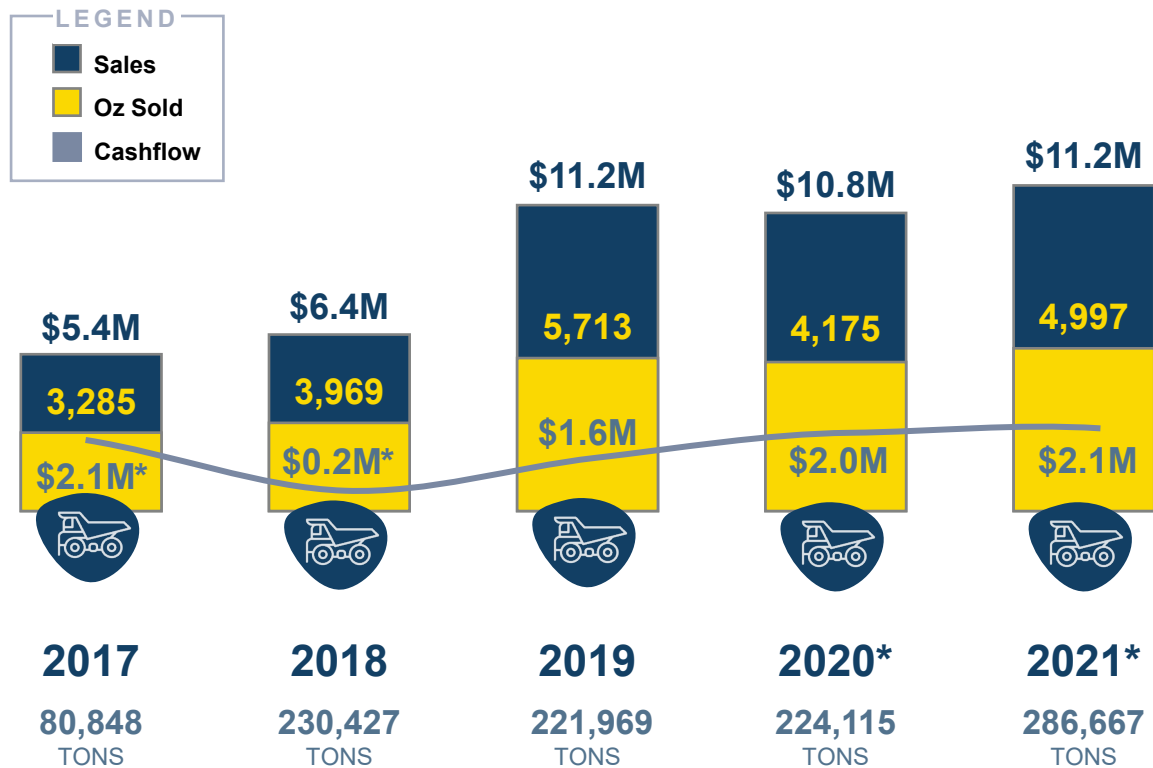
- Analysis, modeling and interpretation of Phase II drilling results
- Planning for follow-up drilling program
- 2021 field exploration
 - Continued systematic exploration of dominant land position





Tailings Reprocessing

Cashflow to fund overhead and minimize dilution



*Estimated





Strategic Infrastructure

FULLY PERMITTED

1,300 tonnes per day
mill and mine
site infrastructure

SIGNIFICANT ASSET VALUE

+\$200M replacement cost;
reduced timeline from
discovery to production

CENTRALIZED LOCATION

Historic operations suboptimal
as a single-source facility;
exploration to provide
multiple ore sources

CURRENTLY GENERATING REVENUE

\$10M+ in revenue annually

UNDERGROUND INFRASTRUCTURE

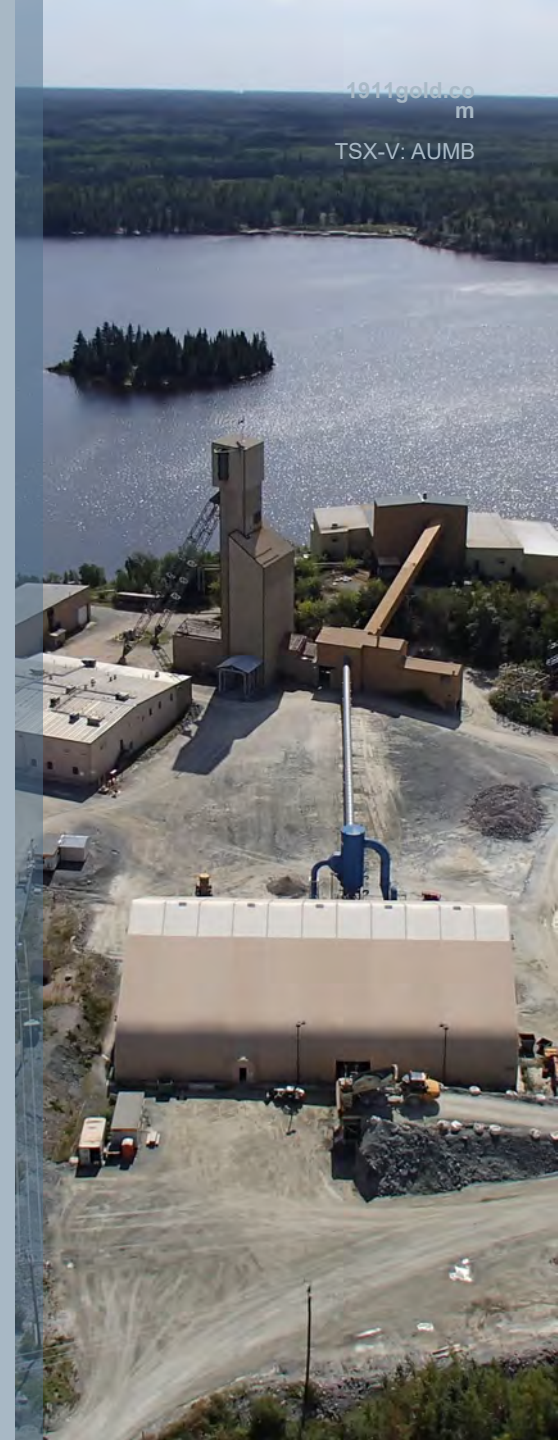
Historical production of
2 million ounces;
significant potential to expand

SUBSTANTIAL TAX AND CREDIT POOLS

\$69M in assessment credits
and over **\$296M in tax pools available**

TRUE NORTH UNDERGROUND RESOURCES (MARCH 2018):

Class	Tons (000's)	Grade AU opt	Grade AU g/t	AU oz (000's)
MEASURED	599	0.21	5.9	125
INDICATED	1,409	0.22	6.2	308
MEASURED & INDICATED	2,008	0.22	6.1	433
INFERRED	3,586	0.17	4.8	605



Leadership



**RON
CLAYTON**

President & CEO

Over 40 years of experience in the mining industry operating in senior executive roles, including acting as President and CEO of Tahoe Resources and as COO of Tahoe Resources during the successful build out of the Escobal mine.



**SHAUN
HEINRICHS**

CFO

Over 20 years of experience in senior corporate finance roles with significant experience in reporting, strategic planning, capital markets and M&A.



**DR. SCOTT
ANDERSON**

VP Exploration

Over 30 years of experience in government geoscience, exploration, academia and consulting, specializing in structural geology, including a definitive study of the Rice Lake gold camp during his 17 years with the Manitoba Geological Survey.

FOCUSED ON PERFORMANCE AND CORPORATE GOVERNANCE

BOARD OF DIRECTORS



MIKE HOFFMAN
Chair



RON CLAYTON
President & CEO



JAMIE HAGGARTY
Director




SHASTRI RAMNATH
Director



DAVID CHRISTENSEN
Director



Strategic Advantages

		
Key Strengths	1911 Gold Corporation	Other Exploration Companies
District scale exploration opportunity	✓	?
Condensed timeline to production	✓	✗
Capital expenditures required	LOWER	HIGHER
Currently generating revenue	✓	✗
Robust exploration model, strategy and methodology	✓	?



604.900.5620

IR@1911GOLD.COM

Suite 1050, 400 Burrard Street
Vancouver, British Columbia, Canada
V6C 3A6





Appendix

District History



Birth of a New Gold District

- 1881: Gold discovered on Black Island
- 1890-91: First geological investigations
- 1911: Rice Lake gold discovery



Early days of exploration



Early Mine Developments

- 1927-1937: Central Manitoba mine
- 1932-1968: Rice Lake (San Antonio) mine
- 1936-1942: Gunnar mine
- 1948-1951: Ogama-Rockland mine



San Antonio gold mine was established in 1926



Subsequent Mine Developments (San Antonio/Rice Lake/True North)

- 1980-1983: Brinco Mining Ltd.
- 1989-1998: Rea Gold Corp.
- 1998-2001: Harmony Gold (Canada) Inc.
- 2004-2015: San Gold Corp.
- 2016-2018: Klondex Mines Ltd.
- 2018-Present: 1911 Gold Corp.



Rice Lake prospect, 1927, J.S. De Lury

Exploration Model

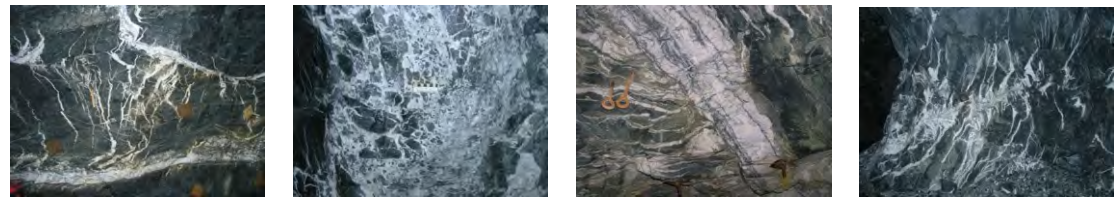
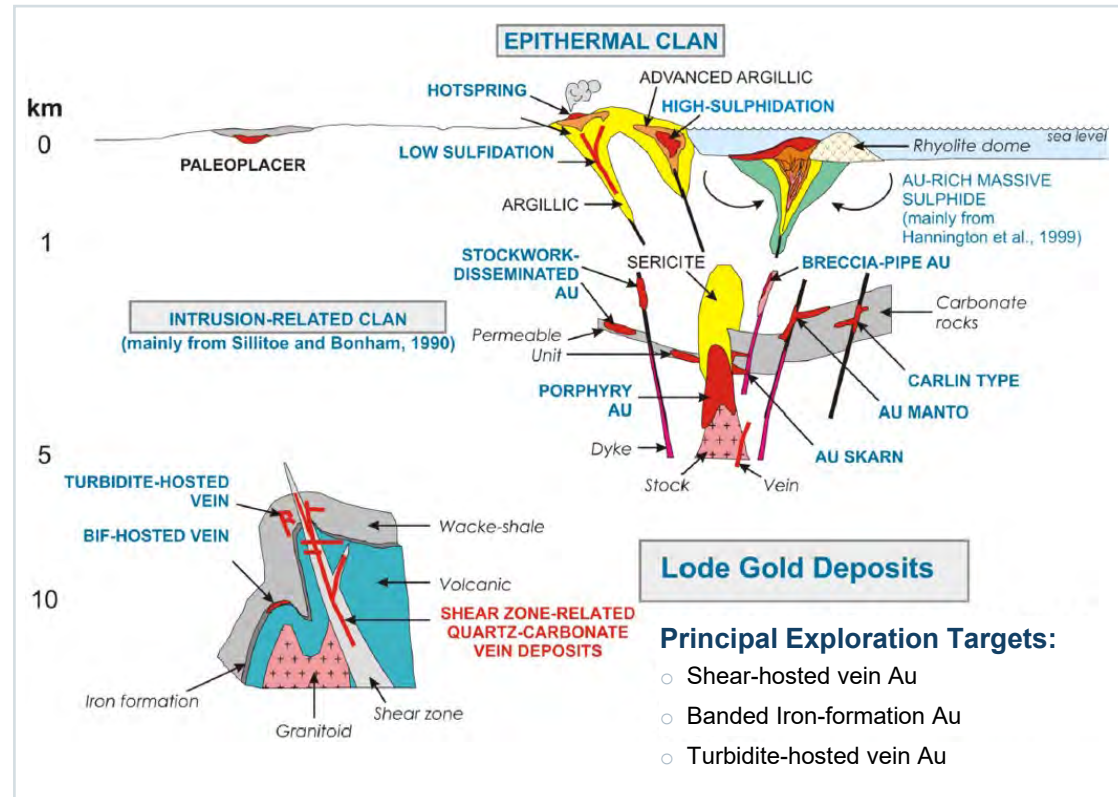
Mineral Systems Concept (Source, Transport, Sink)

Fluid Focusing:

- Splays of crustal-scale break
- Domains of low mean stress
- High differential stress

Local-scale structural controls:

- Shear and hydraulic fracturing of competent rock-types
- Structural anisotropy
- Enhanced permeability
- Channeling of auriferous fluids
- Au precipitation
(chemical/structural traps)



Exploration Methodology

- Science-based prediction/detection strategy
- Systematic, disciplined approach
- Well-managed, cost-effective execution

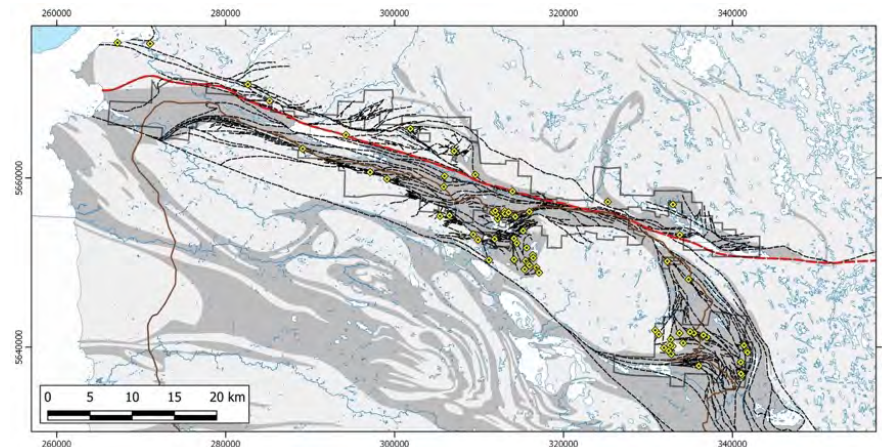
Definition of Prospective Areas

- Interpretation of regional aeromagnetic & LiDAR data
- Complex, optimally-oriented, structures
- Compositionally favourable host rocks
- Gold occurrences, alteration

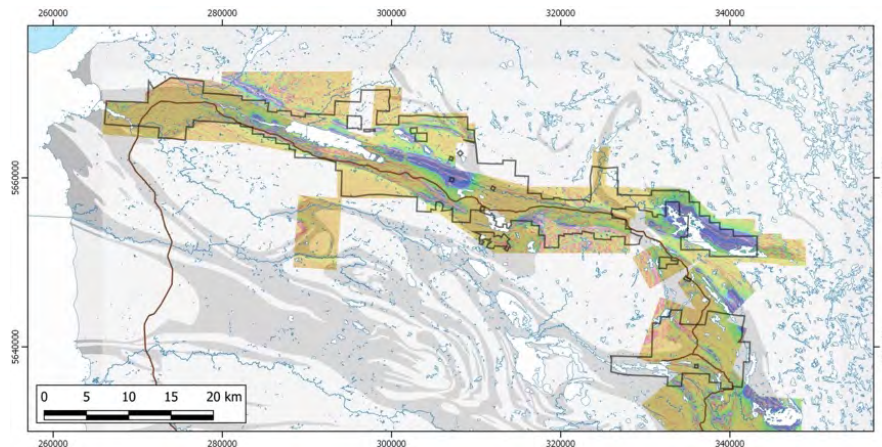
Delineation of Favourable Structures

- Bedrock mapping, prospecting
- Structural interpretation (aeromagnetic and LiDAR)
- Surficial geochemistry (humus and spruce bark)
- Ground geophysics (IP, VLF-EM, MAG)
- 3D modeling (Leapfrog)

REGIONAL STRUCTURE



MERGED AND LEVELED HR AMAG



Other Properties

Focus on Tier-1 Mining Jurisdictions



	Manitoba	Ontario	
	Apex Project (100% owned)	Tully Project (100% owned)	Denton-Keefer Project (100% owned)
HIGHLIGHTS	<ul style="list-style-type: none"> Historical resource* (140k tonnes @ 3.3 g/t Au) Reconnaissance exploration completed in Fall 2019 Adjoins Laguna property under option to Kinross Gold 	<ul style="list-style-type: none"> Stacked extension veins in mafic tuff unit Deposit open at depth and along strike Adjoins Bradshaw property (Gowest Gold) 	<ul style="list-style-type: none"> Along projected trend of PDF Favourable geology and structure Several significant Au occurrences
LOCATION	15km SE of Snow Lake, MB	30km N of Timmins, ON	35km SW of Timmins, ON
PROPERTY AREA	752 hectares	450 hectares	2,100 hectares
TYPE OF DEPOSIT	Orogenic / Intrusion Au	Orogenic lode gold	Orogenic lode gold
GEOLOGICAL SETTING	Flin Flon-Snow Lake belt	Abitibi belt	Abitibi belt
PRINCIPAL STRUCTURE	Crowduck Bay Fault	Pipestone Fault	Porcupine-Destor Fault
PROXIMAL DEPOSITS	New Britannia 1.5M oz. (past prod.)	Bradshaw	Timmins West

* Non-NI 43-101 compliant