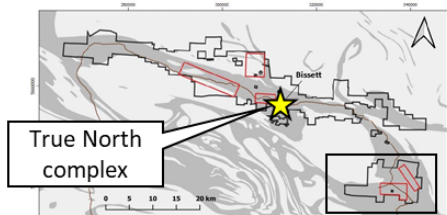
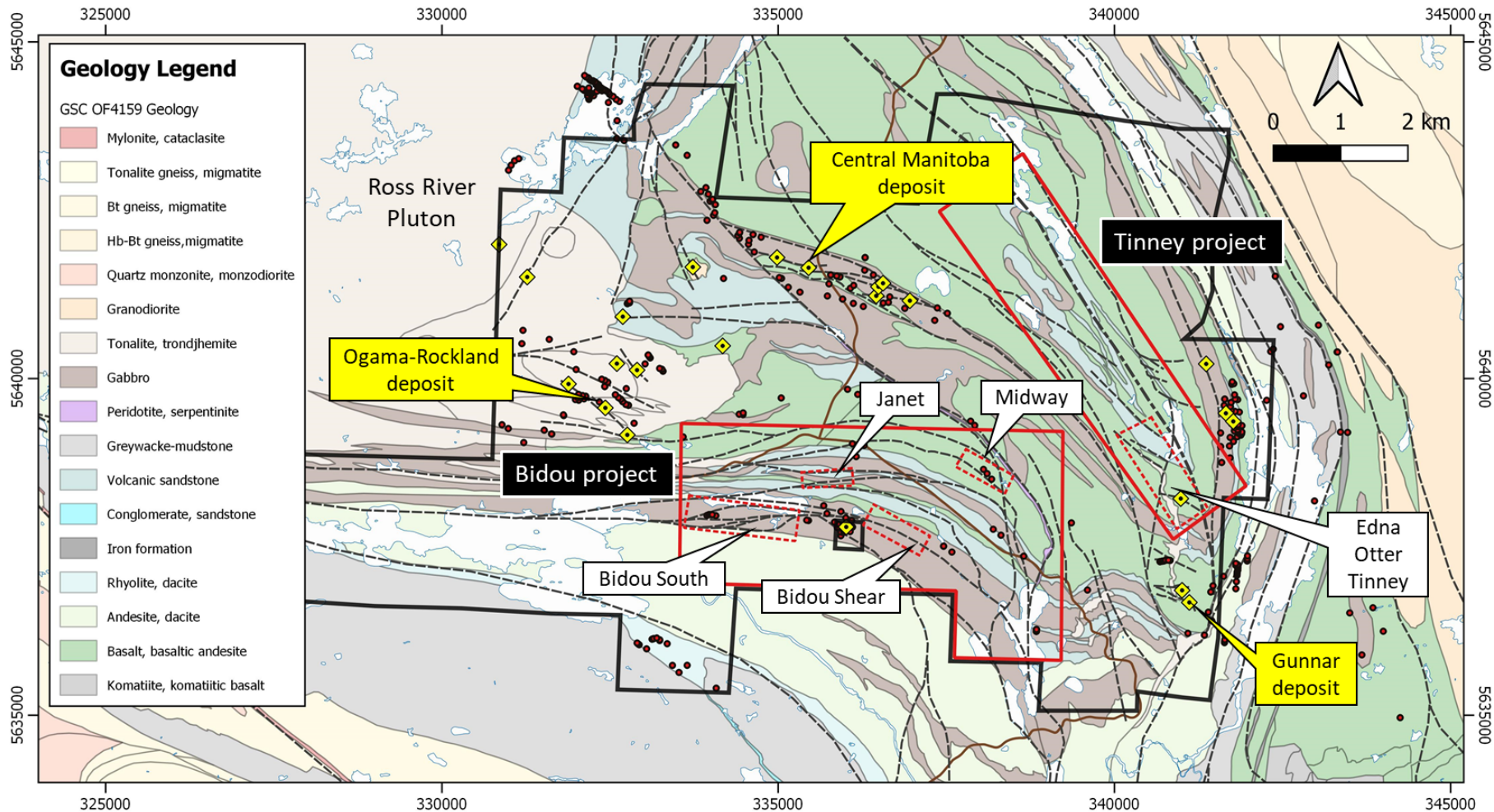


Plan map of the southeast portion of the Rice Lake belt, showing the location of the True North Complex (inset map), 2019-2020 project areas, named drill target areas, and historical workings.



- ◆ Historical mine/working
- Historical diamond drillhole
- Shear zone or fault
- - - Beresford Lake anticline
- ▭ Proposed drilling areas
- ▭ 2019 project areas
- ▭ Claim boundary
- Provincial Road



1911 Gold Corporation